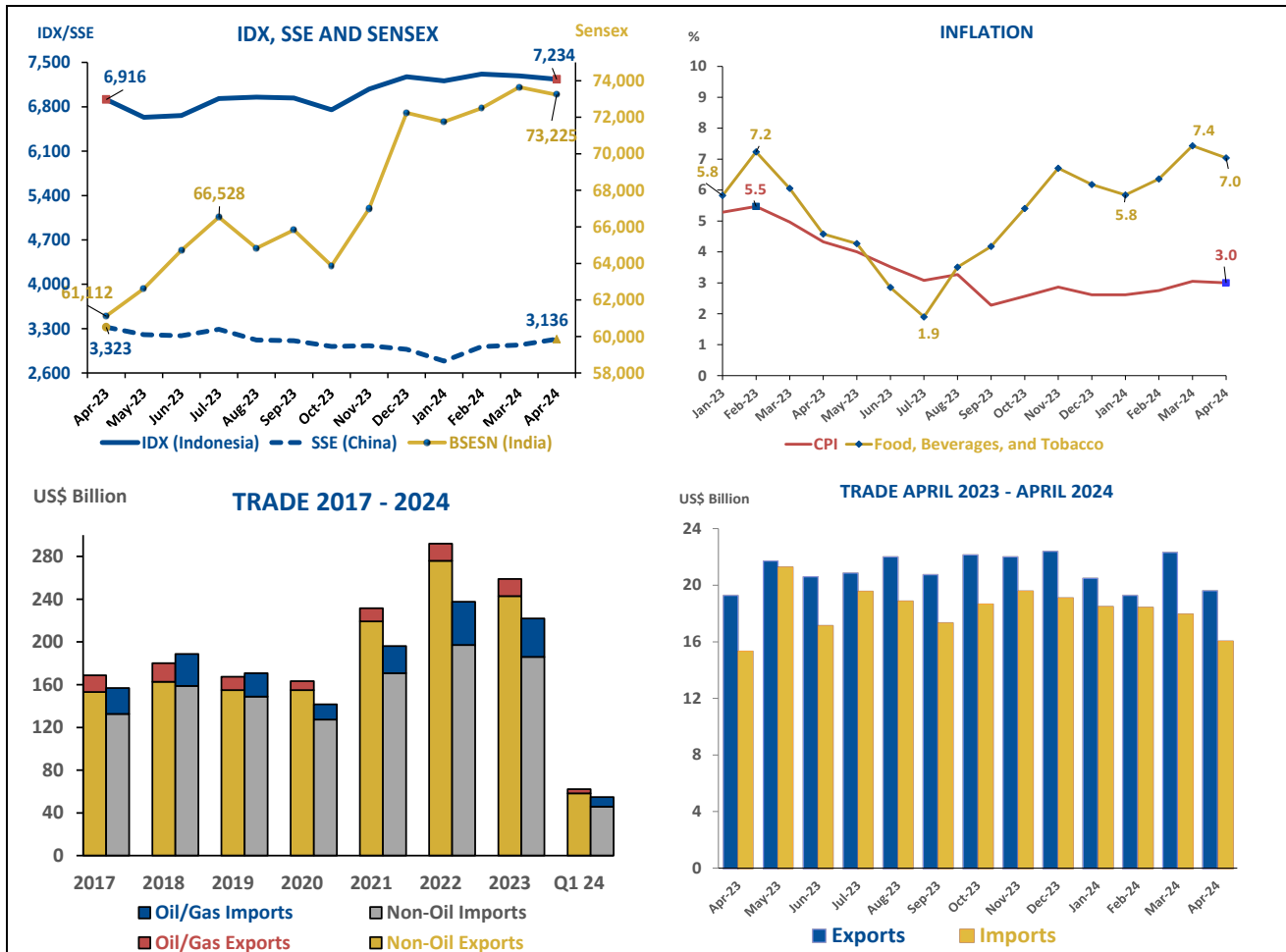
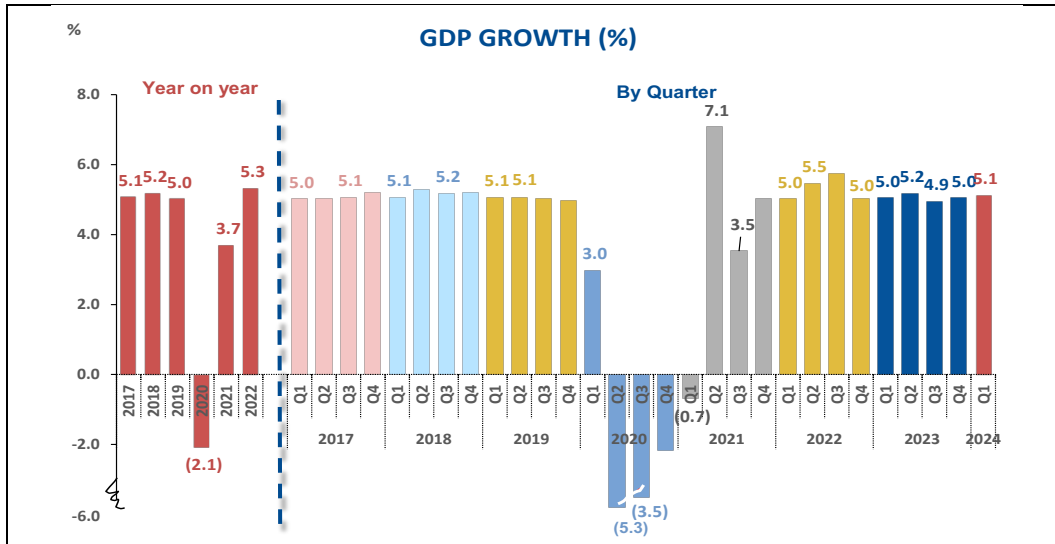
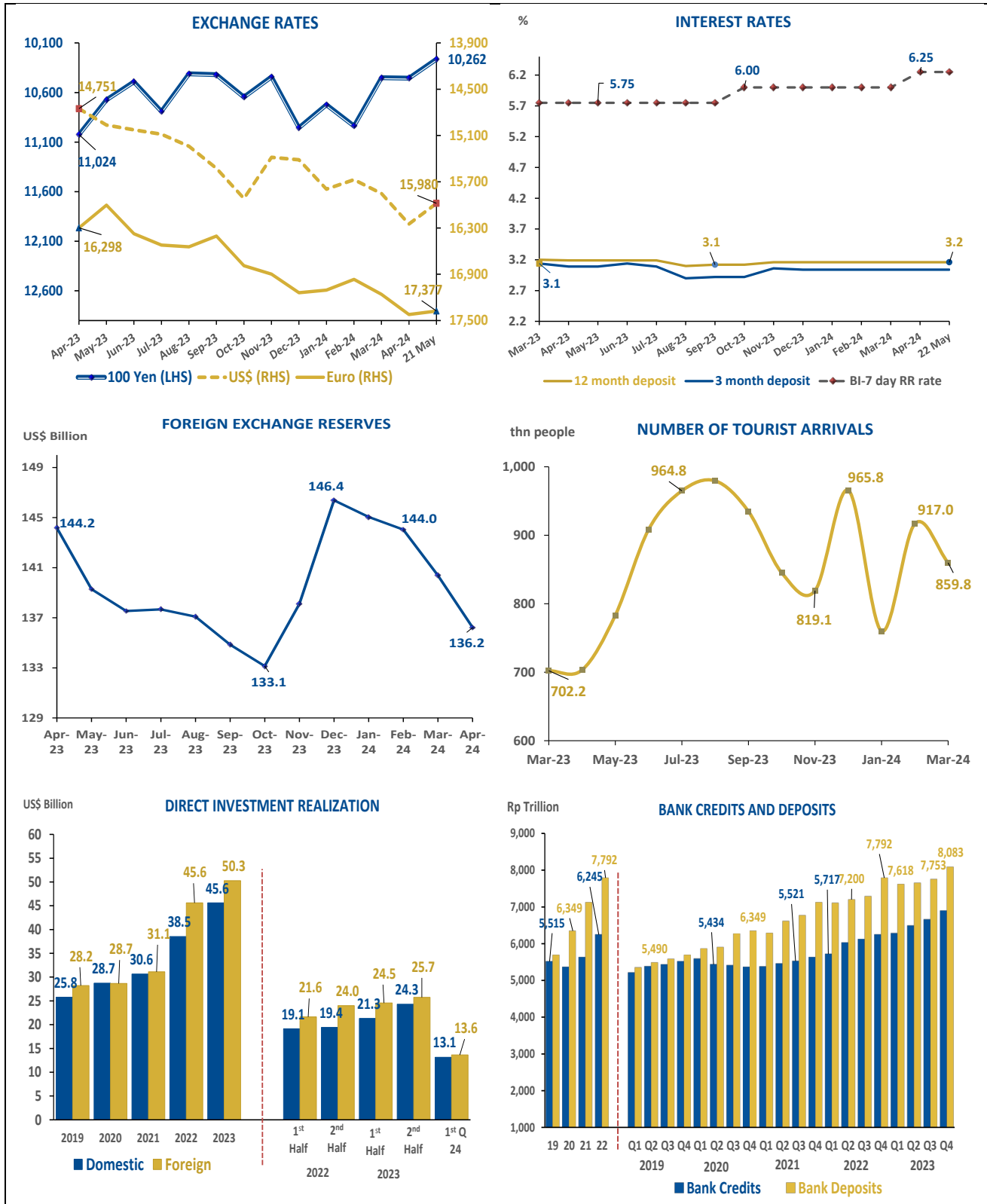


MACRO MONITOR

KEEPING UP. STAYING AHEAD.





		Latest four months (end)				Year End		
		Feb-24	Mar-24	Apr-24	21-May	2021	2022	2023
EXCHANGE RATES (BI middle rate, end period)								
US\$	Rp/US\$	15,673	15,853	16,249	15,980	14,269	15,731	15,416
100 Yen	Rp/Yen	10,936	10,451	10,455	10,262	12,389	11,757	10,955
Sin\$	Rp/Sin\$	11,647	11,766	11,949	11,878	10,534	11,659	11,712
Euro	Rp/Euro	16,965	17,161	17,422	17,377	16,127	16,713	17,140
Pound	Rp/Pound	19,840	20,022	20,366	20,290	19,200	18,926	19,760
FX Rate to US\$1 (Tax Dept rate)	Rp/US\$	15,634	15,710	16,212	16,054	14,294	15,606	15,512
INTEREST RATES - end period								
12 month deposit	%	3.16	3.16	3.16	3.16	2.81	3.45	3.16
3 month deposit	%	3.04	3.04	3.04	3.04	2.69	3.47	3.04
BI 7-day RR rate	%	6.00	6.00	6.25	6.25	3.50	5.50	6.00
INTERNATIONAL RESERVES								
US\$ Billion		145.05	144.04	140.39	136.22	144.91	137.23	146.38
PRICES :								
Indonesia Crude Price (ICP)	US\$/Barrel	77.1	80.1	83.8	87.6	80.6	78.4	82.0
Coal	US\$/Ton	125.9	125.0	109.8	121.1	123.1	201.1	
Palm Oil	M\$/Metric ton	3,842.0	3,907.0	4,194.0	3,818.0	3,899.2	3,741.6	
Copper	US\$/MT	8,332.0	8,359.5	8,314.0	8,544.6	8,265.0	8,470.4	
Brent Crude Oil Spot	US\$/Barrel	81.7	84.0	86.2	88.7	84.0	82.6	
GDP CONSTANT 2010 PRICES								
	Quarterly	Q2/23	Q3/23	Q4/23	Q1/24	2021	2022	2023
GDP Growth (% - year on year)	% YOY	5.2	4.9	5.0	5.1	3.7	5.3	5.1
Private Consumption	% YOY	5.2	5.1	4.5	4.9	2.0	4.9	4.8
Non-profit inst.serving households	% YOY	8.6	6.2	18.1	24.3	1.6	5.7	9.8
Government Consumption	% YOY	10.5	(3.9)	2.8	19.9	4.3	(4.5)	3.0
Gross Fixed Cap Formation	% YOY	4.6	5.8	5.0	3.8	3.8	3.9	4.4
Exports of Goods and Services	% YOY	(2.9)	(3.9)	1.6	0.5	18.0	16.2	1.3
Imports of Goods and Services	% YOY	(3.2)	(6.8)	(0.2)	1.8	24.9	15.0	(1.7)
DIRECT INVESTMENT REALIZATION								
	Quarterly	Q2/23	Q3/23	Q4/23	Q1/24	2021	2022	2023
Domestic Investment	US\$ Billion	11.0	12.0	12.3	13.1	30.6	38.5	45.6
Foreign Investment	US\$ Billion	12.6	13.3	12.5	13.6	31.1	45.6	50.3
BANK CREDITS								
	Rp Trn	Nov-23	Dec-23	Jan-24	Feb-24	2021	2022	2023
Agriculture		6,775.8	6,889.4	6,853.0	6,889.8	5,628.4	6,245.3	6,889.4
Mining		510.8	516.3	513.7	514.3	431.4	475.4	516.3
Manufacturing industry		245.8	257.7	265.3	269.6	136.2	197.5	257.7
Trade		1,065.0	1,077.0	1,064.1	1,060.9	906.4	1,018.5	1,077.0
Services		1,108.9	1,120.0	1,095.7	1,114.5	958.4	1,028.6	1,120.0
Others		1,934.1	1,986.0	1,974.4	1,979.9	1,579.9	1,754.2	1,986.0
Bank Credits	% chg	1,911.2	1,932.4	1,939.8	1,950.6	1,616.0	1,771.1	1,932.4
Bank Credits	% YOY	1.0	1.7	(0.5)	0.5	1.1	1.1	1.7
Bank Credits	% YOY	9.7	10.3	11.6	11.0	4.9	11.0	10.3
BANK DEPOSITS								
	Rp Trn	7,880.2	8,083.3	8,016.4	7,488.9	7,125.0	7,792.0	8,083.3
State Banks		3,339.6	3,488.9	3,432.3	3,433.4	2,959.3	3,370.0	3,488.9
Regional Government Bank		711.5	689.1	676.5	137.7	653.0	687.3	689.1
Private National Banks		3,412.9	3,495.9	3,481.2	3,488.9	3,157.7	3,322.7	3,495.9
Foreign & Joint Banks		416.2	409.4	426.4	428.9	355.0	412.0	409.4
Bank Deposit	% chg	0.6	2.6	(0.8)	(6.6)	2.6	2.5	2.6
Bank Deposit	% YOY	3.7	3.7	5.7	(1.9)	12.2	9.4	3.7
INDONESIA STOCK EXCHANGE (IDX)								
		Jan-24	Feb-24	Mar-24	Apr-24	2021	2022	2023
COMPOSITE	1991 = 100	7,207.9	7,316.1	7,288.8	7,234.2	6,581.5	6,850.6	7,272.8
SECTOR : 1)	2018 = 1000	2018=1000						
Energy		2,106.4	2,106.9	2,122.5	2,229.0	1,139.5	2,279.6	2,100.9
Basic Matrials		1,284.1	1,253.3	1,288.4	1,346.5	1,234.4	1,216.1	1,307.5
Industrial		1,088.2	1,100.1	1,088.0	1,062.9	1,036.7	1,174.3	1,093.8
Consumer Non Cyclical		699.0	707.8	724.7	693.6	664.1	716.6	722.4
Consumer Cyclical		857.3	846.5	820.1	764.3	900.4	850.9	821.4
Healthcare		1,316.6	1,318.1	1,343.3	1,389.5	1,420.1	1,565.0	1,376.2
Financials		1,513.9	1,525.3	1,529.4	1,433.3	1,526.9	1,414.9	1,458.3
Properties & Real Estate		698.7	687.4	664.1	626.9	773.1	711.3	714.2
Technology		4,128.1	3,707.6	3,580.3	3,359.5	8,994.4	5,162.6	4,435.6
Infrastructures		1,523.0	1,599.6	1,559.6	1,621.2	959.3	868.6	1,570.0
Transportation & Logistics		1,587.0	1,575.8	1,468.8	1,329.6	1,599.4	1,661.9	1,601.5
LQ-45	1994 = 100	974.2	989.9	986.0	926.7	931.4	937.2	970.6

		Dec-23	Jan-24	Feb-24	Mar-24	2021	2018=100	2023
	2018 = 100	2018=100						
WHOLESALE PRICE INDEX		117.5	117.7	118.6	119.4	107.7	113.9	117.5
WPI 12 months to date	% YOY	3.1	2.8	3.2	3.6	2.9	5.8	3.1

CONSUMER PRICE INDEX	2018 = 100	Jan-24	Feb-24	Mar-24	Apr-24	2021	2022	2023
90 CITIES		2022=100					2018 = 100	
General 2)	index	105.2	105.6	106.1	106.4	107.7	113.6	116.6
CPI 12 months to date	%	2.6	2.8	3.0	3.0	1.9	5.5	2.6
CPI monthly	%	0.0	0.4	0.5	0.3	0.6	0.7	0.4
Food, Beverages, and Tobacco	index	108.5	109.6	111.2	111.2	111.3	117.8	125.1
Clothing and Footwear	index	102.2	102.3	102.5	103.0	107.0	108.5	109.3
Housing, Water, Electricity and Household Fuels	index	102.1	102.2	102.2	102.2	103.6	107.5	108.1
Furnishings, Household Egg and Routine	index	102.8	103.0	103.0	103.2	108.6	113.9	115.7
Health	index	103.2	103.4	103.6	103.7	109.6	112.8	114.9
Transport	index	108.9	109.0	109.1	110.1	104.6	120.6	122.1
Communication and Financial Services	index	99.7	99.7	99.7	99.6	100.0	99.6	99.8
Recreation, Sport and Culture	index	103.3	103.4	103.4	103.5	105.1	108.3	110.1
Education Services	index	103.0	103.0	103.1	103.1	109.4	112.5	114.7
Food, Beverages Services/Restaurants	index	104.4	104.6	104.9	105.2	110.5	115.4	117.8
Personal Care and Other Services	index	106.2	106.4	107.1	108.6	114.0	120.7	125.0
Food, Beverages, and Tobacco	% chg	0.2	1.0	1.4	(0.0)			
Clothing and Footwear	% chg	0.0	0.1	0.2	0.5			
Housing, Water, Electricity and Household Fuels	% chg	0.1	0.1	0.0	0.0			
Furnishings, Household Egg and Routine	% chg	0.0	0.1	0.1	0.2			
Health	% chg	0.5	0.2	0.2	0.1			
Transport	% chg	(0.9)	0.2	0.0	0.9			
Communication and Financial Services	% chg	(0.1)	(0.0)	(0.0)	(0.0)			
Recreation, Sport and Culture	% chg	0.3	0.1	0.0	0.1			
Education Services	% chg	0.0	0.0	0.1	0.0			
Food, Beverages Services/Restaurants	% chg	0.3	0.2	0.3	0.3			
Personal Care and Other Services	% chg	0.4	0.2	0.7	1.3			

TRADE		Jan-24	Feb-24	Mar-24	Apr-24	2021	2022	2023
Exports (Oil & Gas and Non-oil & Gas)	US\$ Million	20,494	19,274	22,311	19,615	231,522	291,841	20,494
- Exports Oil & Gas	US\$ Million	1,398	1,217	1,285	1,350	12,276	15,879	1,398
Imports (Oil & Gas and Non-oil & Gas)	US\$ Million	18,495	18,440	17,961	16,057	196,197	237,522	18,495
- Imports Oil & Gas	US\$ Million	2,698	2,980	3,327	2,960	25,529	40,416	2,698
Trade Balance (Oil & Gas and Non-oil & Gas)	US\$ Million	2,000	834	4,350	3,559	35,326	54,319	2,000
Exports (Oil & Gas and Non-oil & Gas)	% chg	-8.5	-6.0	15.8	-12.1	41.8	26.1	(8.5)
- Exports Oil & Gas	% chg	-5.5	-12.9	5.6	5.0	47.7	29.4	(5.5)
Imports (Oil & Gas and Non-oil & Gas)	% chg	-3.2	-0.3	-2.6	-10.6	38.6	21.1	(3.2)
- Imports Oil & Gas	% chg	-20.0	10.4	11.6	-11.0	79.1	58.3	(20.0)
Trade Balance (Oil & Gas and Non-oil & Gas)	% chg	-39.1	-58.3	421.9	-18.2	62.5	53.8	(39.1)

		Dec-23	Jan-24	Feb-24	Mar-24	2021	2022	2023
FOREIGN TOURIST ARRIVALS 3)	Thn people	965.8	760.0	917.0	859.8	141	4,147	9,832
Monthly % change	%	17.9	(21.3)	20.6	(6.2)	-	2,836.6	137.1

QUARTERLY PROD. INDICES OF	Quarterly	Q3/22	Q4/22	Q1/23	Q2/23	2020	2021	2022
LARGE & MEDIUM MANF. INDUSTRY	2010 = 100	2010 = 100					2010 = 100	
General Index Production	index	155.6	154.3	146.5	143.7	133.6	143.7	149.4
General Quarterly	% YOY	7.2	4.9	2.1	(0.4)	(10.1)	7.5	4.0
Food Products	index	243.0	233.3	211.2	214.7	200.8	214.9	223.0
Beverages	index	145.8	143.0	139.1	137.4	127.2	136.0	149.6
Textile	index	66.8	62.5	59.2	55.3	63.0	69.5	65.3
Chemical, Chemical Products	index	138.9	136.1	132.7	133.2	136.6	138.4	135.9
Basic Metals	index	179.8	181.4	168.9	175.4	130.7	156.3	175.7
Motor Vehicles, trailers, semitrailers	index	190.2	195.2	192.0	168.2	106.9	162.6	178.3
Food Products	% YOY	7.3	10.7	6.2	(0.9)	(2.1)	7.0	3.8
Beverages	% YOY	4.3	(5.2)	(11.2)	(10.2)	(13.7)	6.9	10.0
Textile	% YOY	(5.1)	(10.4)	(10.2)	(16.1)	(16.0)	10.4	(6.1)
Chemical, Chemical Products	% YOY	0.8	(3.3)	(1.0)	(1.0)	(1.1)	1.3	(1.8)
Basic Metals	% YOY	15.2	11.6	1.9	(0.3)	(10.4)	19.6	12.4
Motor Vehicles, trailers, semitrailers	% YOY	19.6	10.4	6.8	13.6	(26.3)	52.1	9.7

n.a. = not available

1) IDX Industrial Classifications used since February 2021

2) Starting January 2024, the base year was changed to 2022 and the CPI covers 150 cities

3) Starting February 2022, data on foreign tourist arrivals were taken from main International airports and seaports only

Sources: BI, BPS, BKPM, Ministry of Energy & Mineral Resources, Avg of 12 largest Banks as of end month, CastleAsia